



YOU'RE INVITED

**Take a break and enjoy fun,
friendship and fantastic days out.**

WE WILL

- Pick you up from home and drop you back at the end of the trip
- Ensure you have a safe and comfortable day out
- Make it easy for you to book
- Always be happy to listen

YOU WILL

- Feel part of a wonderful group
- Be able to have a comfort stop whenever you need
- Feel revitalised from trying something new
- Make delightful memories and want to go again and again



GENERAL INFORMATION

- All trips will incur a \$10 transport fee which will be invoiced to you
- Allow a whole day for trips, which includes pick up and drop offs

PLACES ARE LIMITED

BOOK TODAY BY CALLING 1800 781 033

We'd love to have you along!

Support – Social Outings are for Consumers who can self-manage. CTST is unable to provide a carer or care support, however, a carer or support person is welcome to register with CTST and accompany you for free. Please advise at time of booking.

Provisions – Make sure you have everything you need for the day: medication, glasses, mobility aids, handbag, keys, etc. Bring enough medication for a full day, allowing for possible delays. Layer clothing to avoid getting too cold or over-warm in air-conditioned vehicles and venues. Bring a bottle of water, a cushion, anything which will make your day more enjoyable.

Listen – Listen to instructions from the Driver about return times and information about the day.

Food – For Diabetics and people with special dietary requirements – please bring your necessities. Remember to pack adequate supplies in case delays occur.

Activity Rating – Only book for Social Outings that you can easily manage. Activity Ratings: **Low** — predominantly passive activity (e.g. restaurant, concert, bus tour); **Light** — a small amount of walking and possibly some stairs (e.g. township visit with optional shopping); **Moderate** — more walking required, stairs and/or escalators (e.g. shopping centre visit, gardens tour).

Waiver – Our Social Outings are prepared in advance and information is correct at time of publishing. However, owing to circumstances beyond our control, some outings may differ from what is advertised, or need to be cancelled (e.g. change of meal or entry costs, venue availability, inclement weather).

CASH ON DAY

Entry
\$15.50

BRING EXTRA Money for lunch & shopping

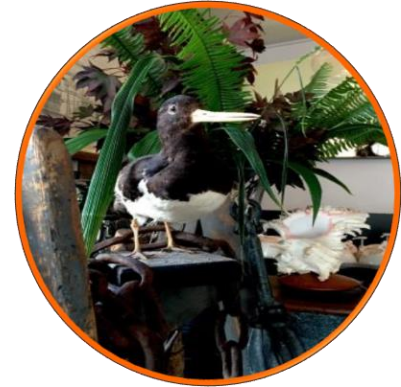
ACTIVITY Light

**SERPENTARIUM
ST HELENS**

Today we head to the newly opened Serpentarium in St Helens before visiting the Lifebuoy Cafe & Quail Street Emporium for some lunch. We will stop at the Eureka Farm for dessert.

▲
Mon 6th
MARCH

■
Tue 7th
APRIL



**TASMANIAN ARBORETUM
SHEFFIELD**

CASH ON DAY

Entry \$5

BRING EXTRA Money for lunch & shopping

ACTIVITY Moderate

Join us to check out the Arboretum at Eugenana for morning tea before we make our way to enjoy the ambience of Sheffield for a spot of shopping at one of the interesting stores. Lunch at the Sheffield Hotel followed by a scenic drive home over the rolling farmland. We will stop at the Parramatta Creek Rest Area for a toilet break to and from. Toilets accessible at all stops.

▲
Mon 2nd
MARCH



CASH ON DAY

BRING EXTRA Money for lunch & shopping

ACTIVITY Light

**FOOD LOVERS
LATROBE**

Food Lovers - come for a drive to the fabulous food-bowl that is Latrobe. The bus will stop at The Cherry Shed, Ashgrove and Anvers. We will stop in Westbury for a toilet break.

■
Tue 3rd
MARCH



CASH ON DAY

BRING EXTRA Money for lunch & shopping

ACTIVITY Moderate

**COAL RIVER FARM
RICHMOND**

Tasmania's hub of cheese, chocolate, pick your own berries and farm restaurant. See handmade batches of cheese and chocolate being made daily or walk the orchard picking seasonal fruits while overlooking the Coal River Valley. Choose to stay for lunch or head off in search of a bite to eat. We will stop in Orford for a toilet stop.

**Tue 10th
MARCH**



CASH ON DAY

BRING EXTRA Money for lunch & shopping

ACTIVITY Moderate

**EASTLANDS SHOPPING
ROSNY**

Grab all of your goodies on a trip to Hobart, stopping at Eastlands. We will stop in Campania for a toilet break to and from.

**Tue 17th
MARCH**

**Mon 11th
MAY**



CASH ON DAY

BRING EXTRA Money for lunch & shopping

ACTIVITY Light

**ALPEN ROSE BISTRO
GRINDLEWALD**

Take a trip to Grindelwald Swiss Village. Wander through the many little stores before stopping for lunch at the Alpen Rose Bistro. On the way home, why not pick up some fresh fruit and vegetables from the Legana Grove Greengrocer before visiting the shopping hub to pick up any other bits and pieces you may require from somewhere such as the reject shop. Toilets accessible at all stops.

**Mon 23rd
MARCH**

**Tue 31st
MARCH**



CASH ON DAY

BRING EXTRA Money for lunch & shopping

ACTIVITY Moderate

**OP SHOP BARGAIN HUNT
DEVONPORT**

Devonport Op Shops. Come and find a bargain and choose where you would like to eat. We will stop at the Parramatta Creek Rest Area for a toilet break to and from.



▲
Mon 30th

MARCH

■
Tue 21st

APRIL

CASH ON DAY

Entry \$10

BRING EXTRA Money for lunch & shopping

ACTIVITY Moderate

**RICHMOND GOAL
RICHMOND**

The oldest intact gaol in Australia. The Gaol was built in 1825 and is one of the best-preserved convict structures still existing in Tasmania. We will then head to the 'Wicked Cheese' factory for lunch in their café. We will stop in Orford for a toilet break.



■
Tue 24th

MARCH

CASH ON DAY

BRING EXTRA Money for lunch & shopping

ACTIVITY Low

**MOLE CREEK HOTEL
MOLE CREEK**

Join us for a hearty pub-lunch at the Mole Creek Pub along with morning tea and a scenic drive through the stunning Meander Valley. If you like, stop at the Chudleigh honey farm for an ice cream. We will stop in Westbury for a toilet break. Toilets accessible at all stops.



▲
Mon 6th

APRIL

■
Tue 26th

MAY

CASH ON DAY

BRING EXTRA Money for lunch & shopping

ACTIVITY Moderate

**BROOKFIELD SHED
MARGATE**

A hub of food and things to do. Enjoy many local products for retail including craft, free range eggs, woodwork and an art gallery plus a delicious café which uses only local produce. We will stop in Kempton and Montrose Bay for a toilet stop to and from.

Tue 14th
APRIL

Mon 27th
APRIL



CASH ON DAY
Entry \$20 Lunch Included

BRING EXTRA

ACTIVITY Moderate

**TWAMLEY FARM
BUCKLAND**

Twamley Farm is a working farm on the East Coast in the village of Buckland. View the beautiful old buildings, meet the animals and have a delicious lunch on site.

Mon 20th
APRIL

Tue 28th
APRIL



CASH ON DAY
Entry \$20

BRING EXTRA Money for lunch & shopping

ACTIVITY Moderate

**AGFEST
QUERCUS PARK**

Join us as we explore Agfest. The largest event of its kind in the Southern Hemisphere, Agfest is a great day out. With over 700 exhibitors the event has something for everyone.

Thu 7th
MAY

Fri 8th
MAY



CASH ON DAY

BRING EXTRA Money for lunch & shopping

ACTIVITY Moderate

**SHOPPING DAY
NEW NORFOLK**

Today we will head to New Norfolk for a day of shopping and a visit to the Glen Derwent Tea Rooms.

Tue 12th
MAY

Mon 25th
MAY



**RSL MILITARY MUSEUM
SCOTTSDALE**

See the famous Scottsdale RSL Military Museum where you can see a range of memorabilia from every conflict Australia has been involved in since the Boer War. Stop for lunch of your choice; maybe the famous Cottage Bakery or the new café within the Eco Centre. Toilets accessible at all stops We will stop in Perth and Myrtle Park for toilet stops.

Tue 19th
MAY



**LALLA FLOWER FARM
LAUNCESTON**

Today we head to the Lalla Flower Farm. This is a unique historical horticultural garden of significance. Located 25 minutes north east of Launceston, this garden has a rich, diverse and exhilarating history. We will then head into Launceston for your choice of lunch. We will stop in Launceston for a toilet break.

Mon 18th
MAY

